



# Jinan Welle Metal Product CO.

**“WELLE”- Qualified quality than everything!**

---

- With 20+ years of manufacturing experience, we work with 200+ trusted manufacturers.
- Benefit from our expertise and support throughout your purchasing journey.
- Choose from 73+ manufacturing processes, all backed by ISO 9001:2015 certifications for quality assurance.
- One-Stop Solutions (Supplier Sourcing, Factory Audits & Quality Control, Cost Analysis, Logistics, Translators)

## ABOUT US

“WELLE”- Qualified quality than everything!

Jinan Welle Metal Products Co., Ltd was established on 2018, we are located in Jinan, the capital of Shandong Province. It is about 30 minutes away from Jinan Yaoqiang airport .

Since 2004, WELLE apply us to R&D and manufacturing of complex metal parts with ISO9001. We are developing and getting stronger all the time because of the hard work during these years. Now, our factories consist of trading, scientific research and manufacture.



威勒金属

WELLE METAL PRODUCTS

*WELLE- Qualified quality than everything*

Over 95% of our products are exported to Europe 50%,America 35% and Asian 15%,etc

As the company grew, WELLE showed its greatest strength:

- Advanced fabrication facilities & quality inspection equipment
- Perfect quality control system
- Rich development experience and manufacturing process
- Complete sales service network

"Qualified quality than everything" is WELLE's pursuit forever.



## **Vision**

“WELLE”- Qualified quality than everything!

**WELLE Aims to be one of the top professional sourcing providers in China for purchasing requests from potential customers with real demands around the globe.**

**◆ Our Vision is aligned with 3 key human factors:**

- ✓ Good relationship with customers
- ✓ Good relationship with manufacturers
- ✓ Good relationship with employees

**◆ Our Vision is also aligned with 3 key non-human factors:**

- ✓ Product quality
- ✓ Cost efficiency
- ✓ Delivery on time

## Product

“WELLE”- Qualified quality than everything!

Gears



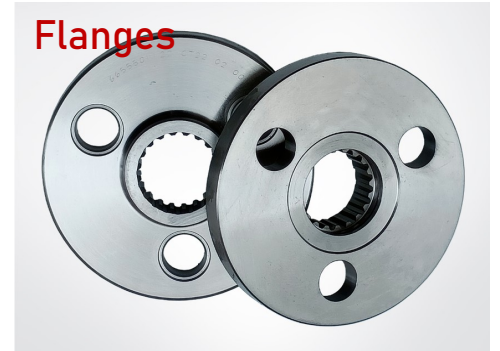
Fasteners



Machined Shafts



Flanges



Sealings



Cold Forging



Worm Shaft



Sleeve & Bushings



## Product

“WELLE”- Qualified quality than everything!

Stampings



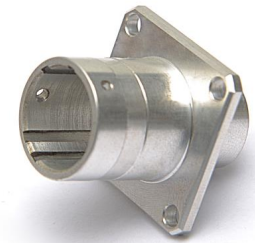
Castings



Welding



5 Axis CNC Machining



Sintering(PM/MIM)



Plastic & Rubber Injection



## Solution

“WELLE”- Qualified quality than everything!

### Solution 1: Commercial Solution

- ✓ Sourcing supplier and quoting
- ✓ Supplier auditing&Visiting
- ✓ Purchasing&Selling
- ✓ Travel arrangement

### Soultion 2: 3<sup>rd</sup> Party Quality Solution

- ✓ FAI in JNWelle's Inspection center
- ✓ Production Inspection in JNWelle's Inspection Center or and in factory
- ✓ Supplier manufacturing supervising
- ✓ Warehouse for safety stock

### Solution 3: 3<sup>rd</sup> Party Logistics Solution

- ✓ Apply to customs
- ✓ Customs Clearance
- ✓ Transportation inland and sea

 威勒金属 WELLE METAL 济南威勒金属制品有限公司	<b>承诺可行性</b> 签字会传给采购部门 DQ 7319 / 02 Edt. 2019/04/05	联系人: 张士强 电话: +86-13518615357 邮箱: Rocky@welleshaft.com
--	---	---

<b>用途:</b> <b>产品名称:</b> <b>图例编号:</b>					<b>制造过程:</b> <b>工业和专用工具工程:</b> <b>需求规格参考:</b>				
--	--	--	--	--	---	--	--	--	--

<b>A. 临界性</b>					
1: 在过程能力范围内提出要求 (以图纸上定义的)					
这些要求在批量生产后应达到CP>1.33(CP-制程精密度: 表示制程特性的一致性程度)					
关键和功能尺寸	具体要求	期望公差	备注	威勒(CP)	意见


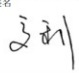

其他关键性要求 (结构, 材料处理和规格...)	具体要求	建议	备注	威勒(CP)	意见

产品是否符合欧洲环保指令: 2002-53 CE ?

**2: 产品可行性结论**

日期  
签字

<b>3: 改进性建议和降低成本的意见</b>					
包括但不局限于质量提升和/或与降低成本相关的结构, 尺寸, 公差, 原材料的选择和特殊处理以及其他所					

	
<b>检测报告</b>	
编号 : GZIN2306003980ML01-CN	
日期 : 2023-06-21	
页码 : 1 of 2	
客户名称:	济南威勒金属制品有限公司
客户地址:	中国 (山东) 自由贸易试验区济南片区齐鲁文化创意基地 17 号楼 104 室
样品名称 :	材料
产品规格 :	φ12
型号 :	不锈钢棒
材质牌号 :	UNS S45500
以上信息及样品由客户提供及确认, SGS 不承担证实客户提供信息的准确性、适当性和/或完整性的责任。	
SGS 参考号 :	CP23-023286
收样日期 :	2023-06-19
测试周期 :	2023-06-19 ~ 2023-06-21
测试结果 :	请见下页 (除另有特别说明外, 此报告结果仅对测试样品负责)
通标准技术服务有限公司广州分公司 授权签名	
	
高利	授权签字人
	
Unless otherwise agreed in writing, this document is issued by the Company subject to its General Conditions of Service printed hereon, available on request or accessible at: <a href="http://www.sgs.com/ServiceConditions">http://www.sgs.com/ServiceConditions</a> . Reference is drawn to the location of SGS's independent and impartial service providers. Any holder of this document is advised that information contained herein reflects the Company's findings at the time of its issuance only and within the limits of client's responsibility. It also, the Company's sole responsibility to the Client and the Client's responsibility to the relevant parties for the information provided. All rights are reserved under the Information Documents. This document cannot be reproduced except in full, without prior written approval of the Company. Any unauthorized alteration, forgery or falsification of the content or appearance of this document is strictly prohibited and may result in prosecution to the full extent of the law. Clients are asked to inform the results shown in this test report only to the supplier(s) named and not to other parties. The validity of this test report is limited to the test results only.	
16/16, Nanyang Road, Xiamen City, Xiamen City Economic & Technological Development Area, Xiamen City, Fujian Province, China 361000 中国·广东·广州高新技术产业开发区科学城增城路119号 邮编: 510863	
1 800-201-0210 1000000000 1 800-201-0210 1000000000	
www.sgs.com.cn sgs@sgs.com.cn	
Member of the SGS Group (SGL)	

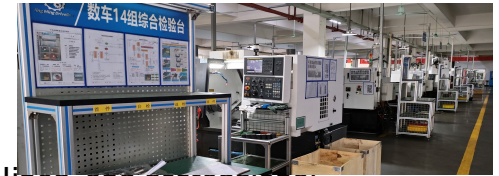


## Manufacturing Line

“WELLE”- Qualified quality than everything!

### Outsourcing Factory 1

The gear factory, equipped with over 100 sets of various kinds of gear machines, CNC machines, 3 heat treatment lines, and professional inspection machines. Focusing on supplying auto parts to vehicle manufacturers, it exports the products mainly to the USA and Europe. The factory has a product portfolio covering 10 series and over 200 different specs. It is certified with ISO9001 and TS16949, with annual production capability reaching 800K Helix Bevel Gear and 1.2M Cylindrical Gear.



### Outsourcing Factory 2

The machining factory has more than 300 employees and over 300 sets of CNC machines and other advanced machining equipment. It supplies Vehicle Axle and seating, stamping and welding parts for auto and heavy trucks in American, Europe and Chinese markets. It is certified with TS16949, ISO14001 and 3C.



### Outsourcing Factory 3

Covering 200,000 square meters with building area of 10,000 square meters, the factory has 300 employees, of whom 30 are engaged in engineering and technical support. Equipped with 30 lines of the advanced automatic Bolt and Nut Cold heading Machinery with 100 sets of Threading and Grinding machinery, 6 Pre-dephosphorization Heat Treatment Production Line. The products are widely used in Automotive Standard Fasteners, Non-standard fasteners and High-strength High Grade Standard Fasteners etc. Its production capacity of models reaches 30000 tons per year. It is certified with IATF16949, ISO14001 and ISO/IEC17025:2017..



In the past years, **WELLE** has surveyed thousands of suppliers and established a wide, reliable network of “member manufacturers” and partners, totaling around **200** manufactures, with **10% stamping members, 11 % forging members, 15% machining members, 9% Plastic/Rubber molding members, 16% casting members, 13% MIM/PM members, 9% welding members, 3% mold (for metal and plastic) members, and 14% others.**

## Engineering&Inspection

“WELLE”- Qualified quality than everything!

### Quality

- ✓ JNWELLE passed ISO9001 in 2018 and the quality of products is guaranteed to meet customer requirements.
- ✓ To ensure quality, most of our manufacturers are required to pass international quality certifications such as **ISO9001, IATF16949, QS9000, VDA6.1, ISO14000**, etc.
- ✓ JNWELLE is characterized with expertise from its experienced engineering team in part design, **technical review, quality control, and project follow up** etc. Our engineers not only work in our office but also on the plant of subcontractor's factories.

### Design Tool

- ✓ AutoCad
- ✓ Pro/Engineer
- ✓ Solidworks

### Inspection

Right Quality Control Means Reliable Finished Products

- ✓ Our engineers not only work from our office but also on the plant of factories.
- ✓ We carry out systematic inspection with **various advanced test equipment**, which provides strong support for the quality control **from sampling to bulk production**.
- ✓ **100% inspection** for FAI and regular inspection in process. We only ship products up to quality standard.
- ✓ If required, we can also handle Advanced Product Quality Planning (**APQP**) – and we can also document individual elements such as PPAP, p-FMEA or MSA.





## Warehousing & Logistics

“WELLE”- Qualified quality than everything!

We have our own warehouse that provides safe inventory and reliable transfer space for customers' goods as well as independent inspection for the products before shipment.

- ✓ JNWELLE sets up its warehouse associated with the inspection center, in which its inspection team can perform inspection for all production **before shipment**.
- ✓ On one side, such a warehouse guarantees **100% targeted on-time delivery** thanks to the safe inventory and reliable transfer space.
- ✓ On the other side, in this warehouse JNWELLE team can make **further inspection** on the pallet goods to strengthen quality control before shipment.
- ✓ JNWELLE also keeps the warehouse synchronization with its long-term cooperative factories, and the team is able to carry out inspection in the factories **at any time** needed.



“WELLE”- Qualified quality than everything!



## Submit Your RFQ

Please upload the 3D model, 2D drawings and BOM process instructions in the form of compressed package(.rar/.zip).

Parts drawings, quantity, material, surface treatment requirements for quotes must be specified in the attachment.

**Our Sales Team will contact you shortly.**

[Download inquiry sheet](#)

Working Hours:  
Administration: 8 am-12 am and 1.0 pm-5 pm From Monday to Friday;  
Production; 6 am-2 pm and 2 pm-10 pm, 10 pm-6 am From Monday to Saturday;

**Rocky zhang**  
**E-mail: Rocky@welleshaft.com**